

LARSyS
Laboratory of Robotics
and Engineering Systems



MARETEC
MARINE ENVIRONMENT & TECHNOLOGY CENTER

Seminário “Paisagens Fire-Smart: Criando territórios resilientes ao fogo”

Use of space and effects on vegetation structure by free-range cattle in a regenerating forest of *Quercus pyrenaica*.

Vânia Proença¹, **Inês Ribeiro**¹, Tiago Domingos¹

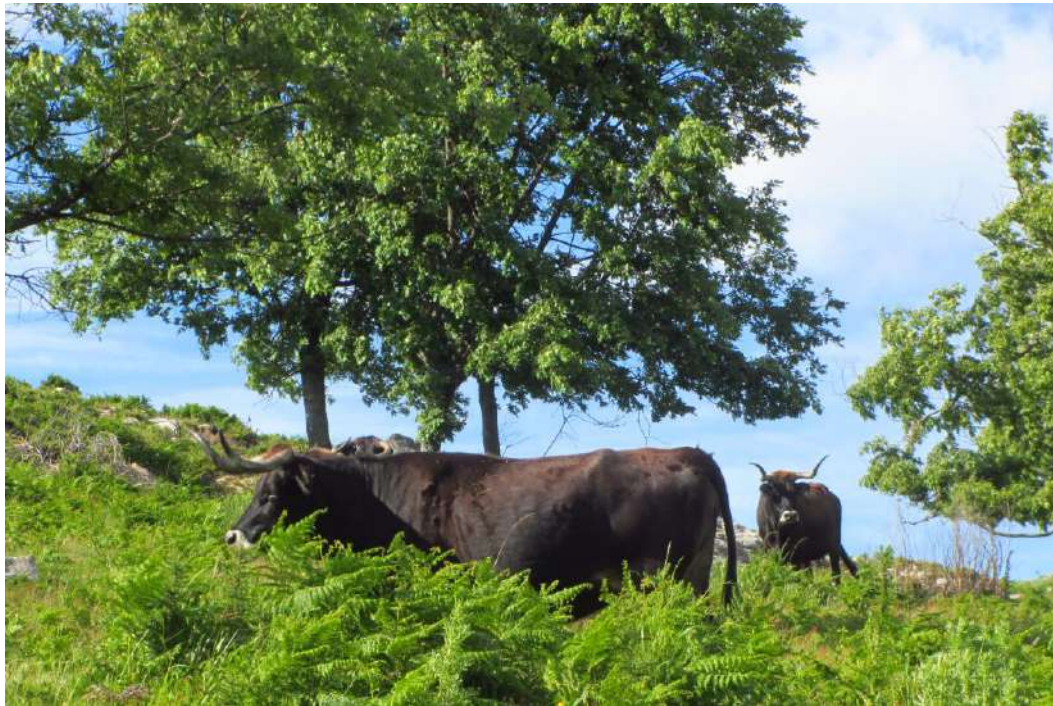
¹ MARETEC, LARSyS, Instituto Superior Técnico, Univ. Lisboa

FCT

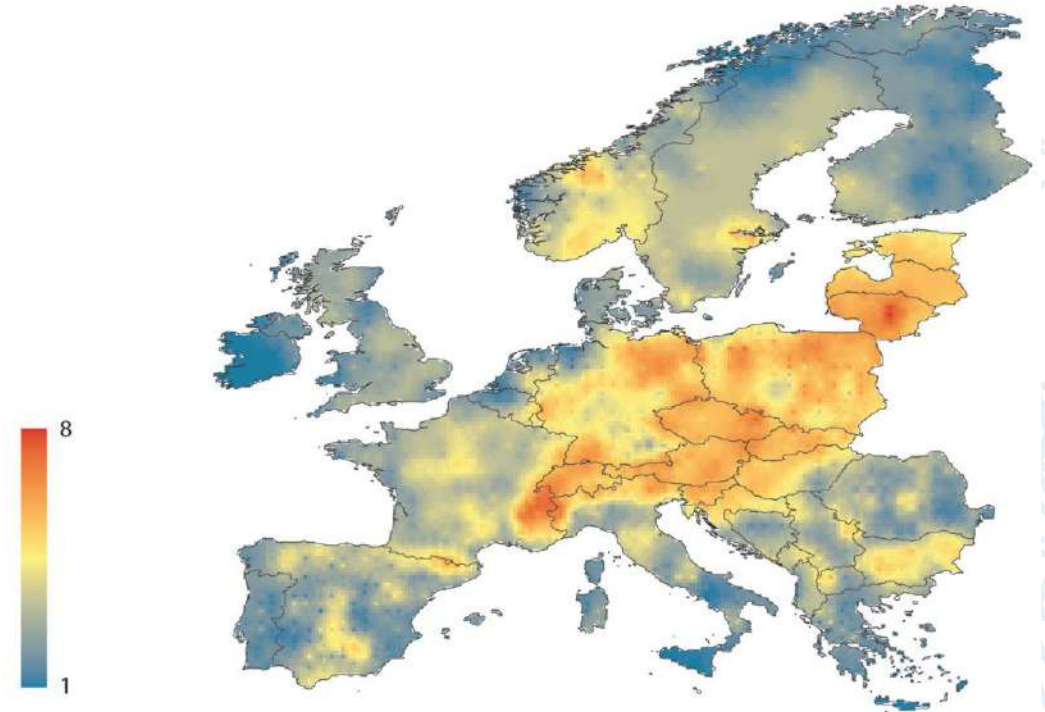
Fundação para a Ciência e a Tecnologia
MINISTÉRIO DA CIÊNCIA, TECNOLOGIA E ENSINO SUPERIOR



Large herbivores and ecosystem dynamics



Species richness for extant large herbivores of Europe



Navarro et al. 2015, Rewilding European Landscapes

Testing the use of livestock to manage vegetation

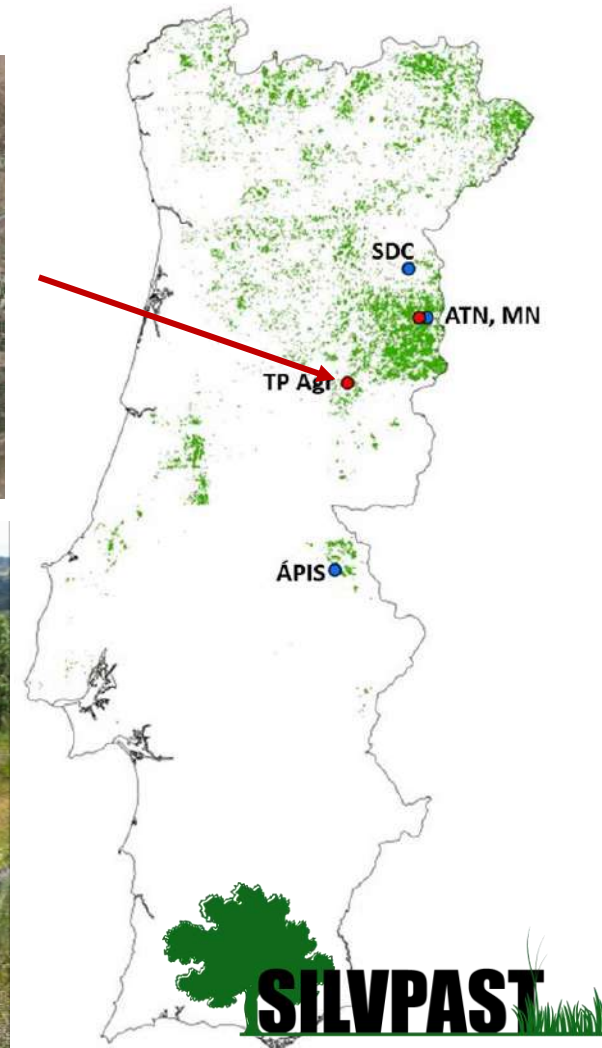
Operational Group SILVPAST

Goal: test and develop the implementation of silvo-pastoral mosaics, supported by remote sensing tools, to assist agricultural and forestry activities in areas of black oak (*Quercus pyrenaica*).

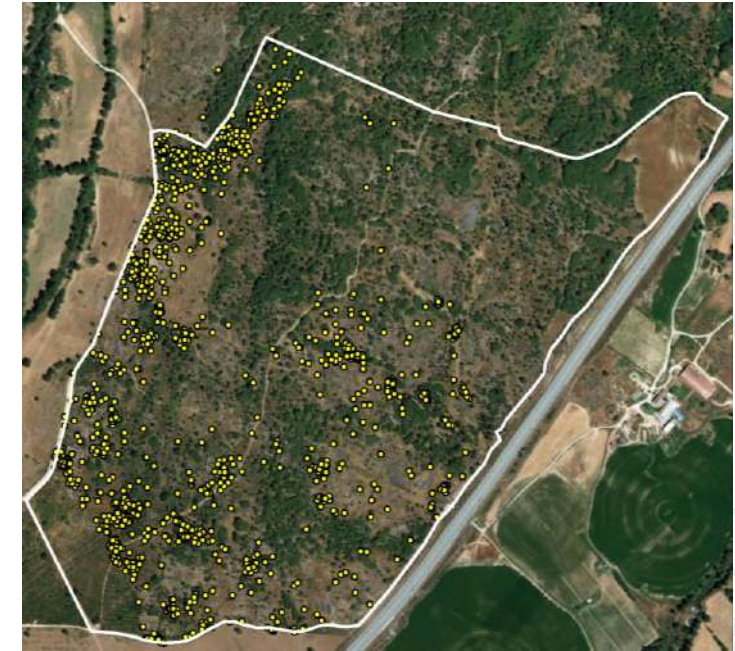
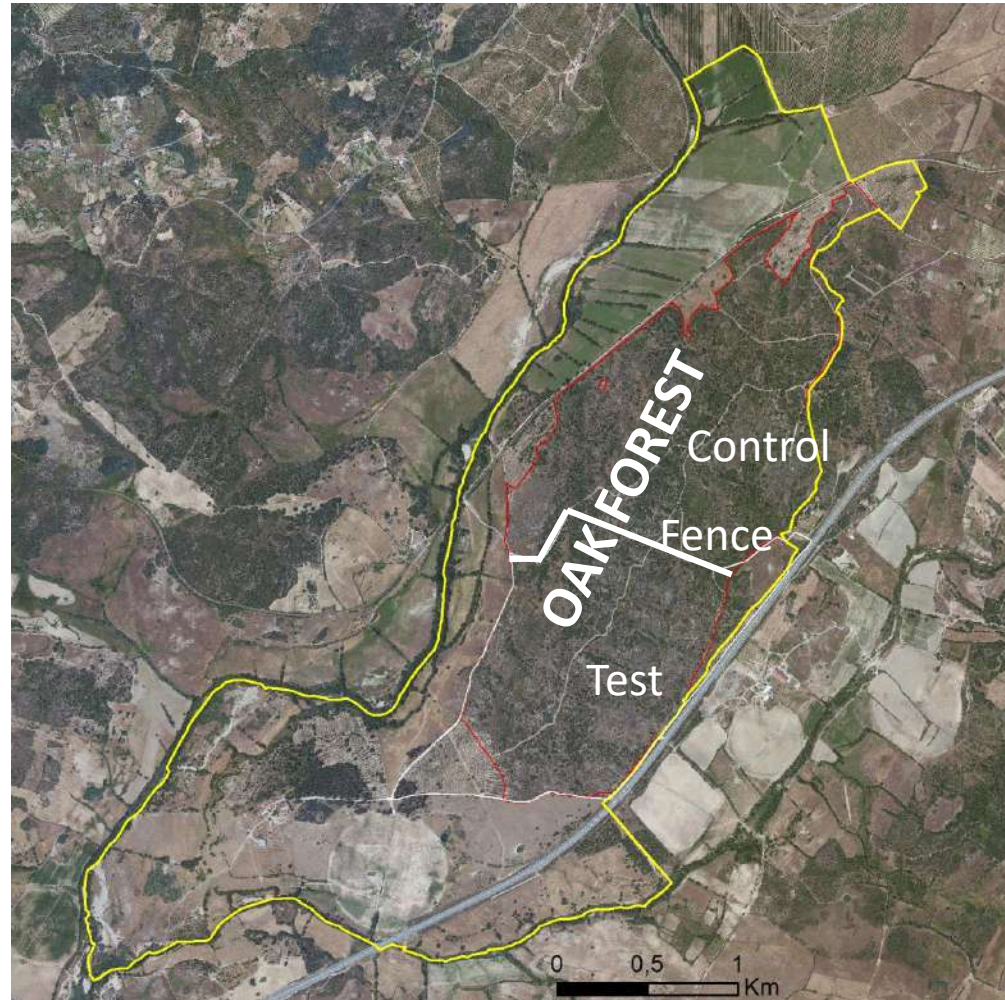
Team: Farmers (landowners), NGOs, Researchers

Silvo-pastoral mosaics:

- i) Pastures in open areas, with livestock
- ii) Forest parcels open to livestock
- iii) Forest parcels closed to grazing

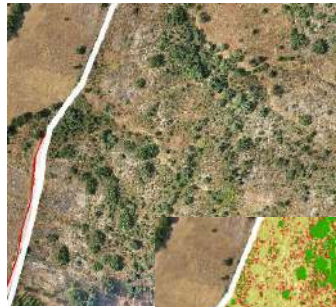


Study Area – Quinta da França



Test area
Cattle GPS locations
July 2018

Use of space and habitat selection by cattle



Drone



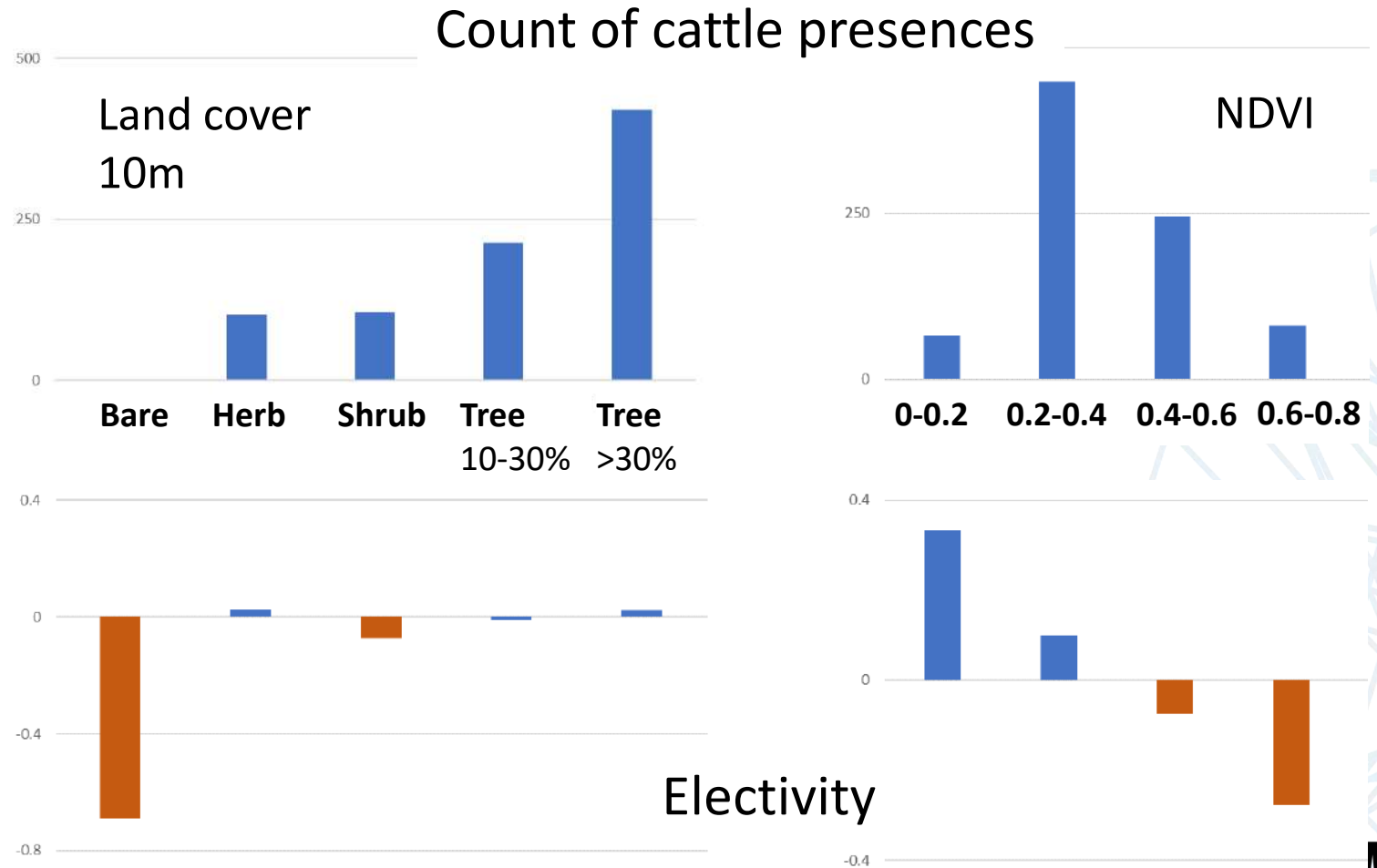
Land cover
0.6m



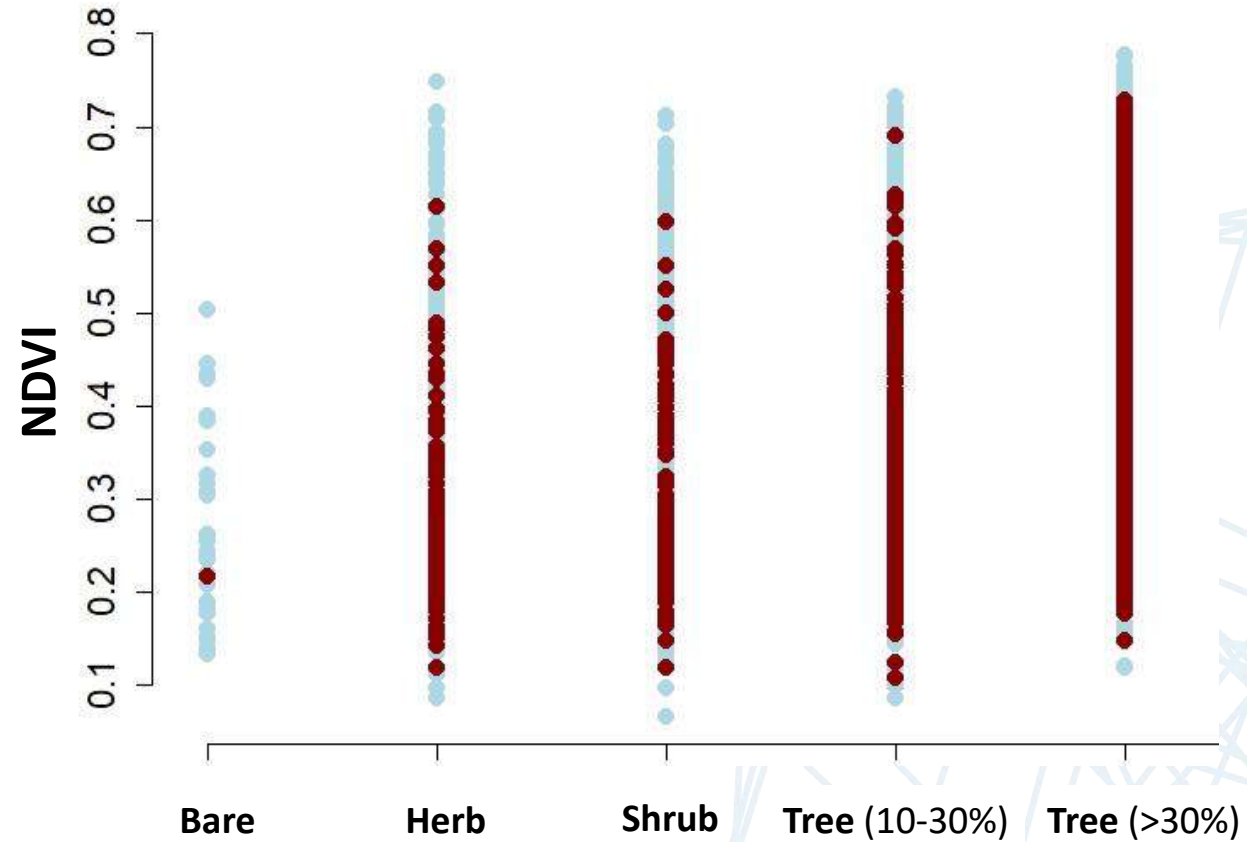
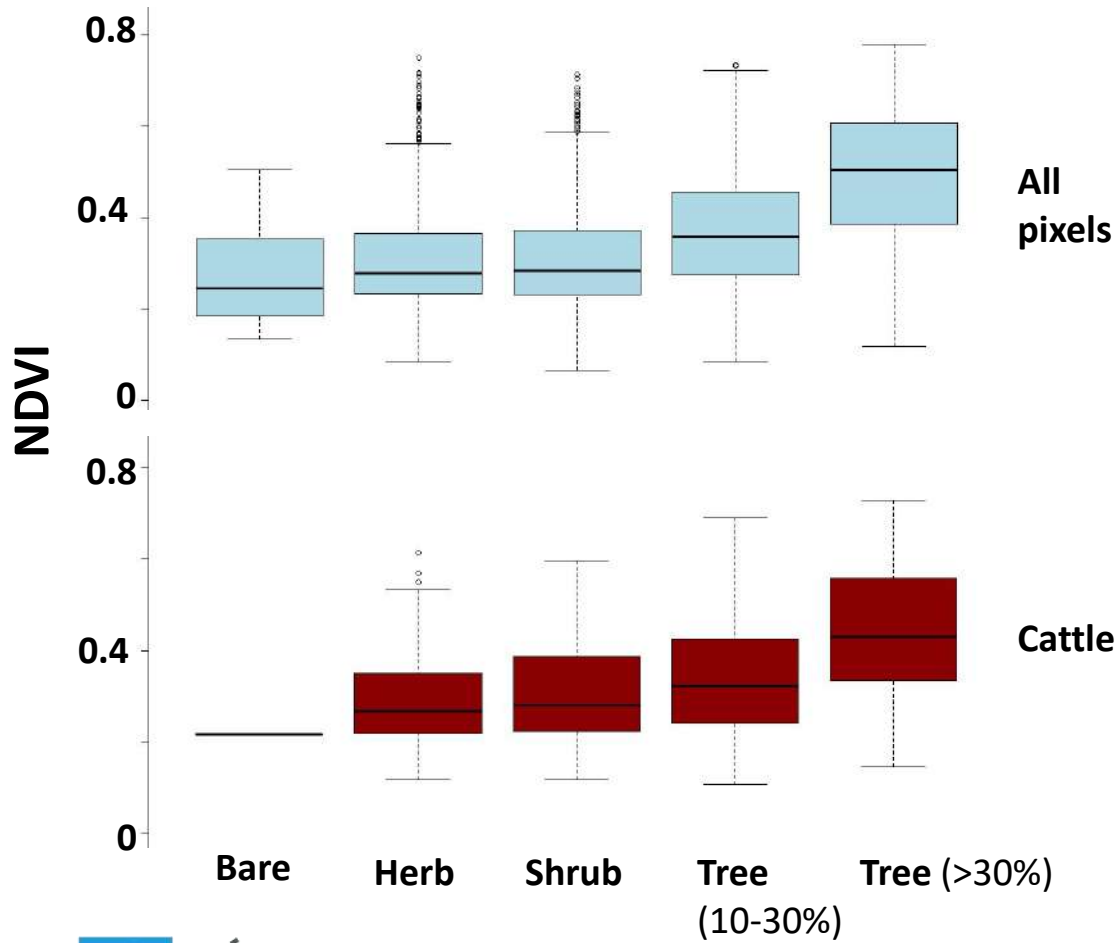
Land cover
10m



NDVI summer
10m



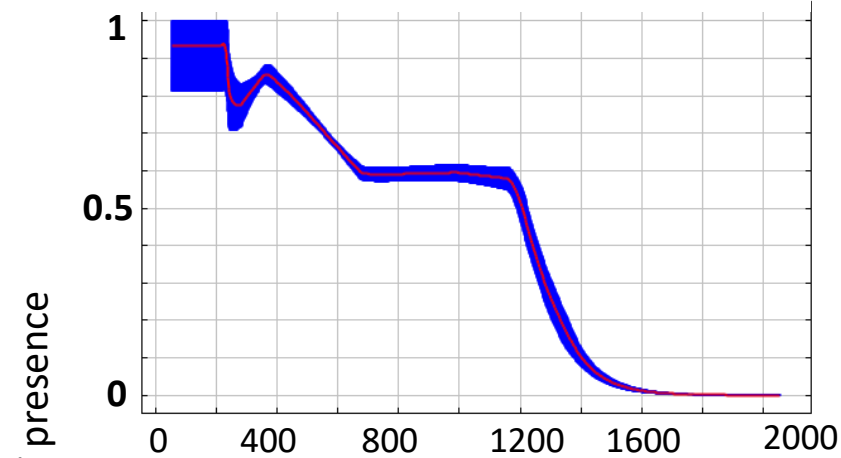
Use of space and habitat selection by cattle



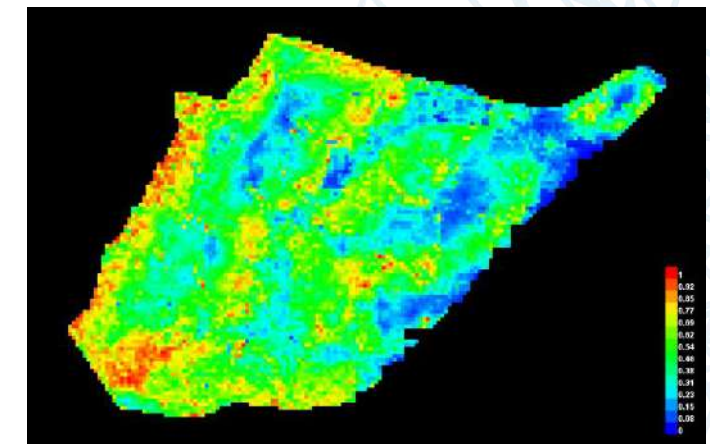
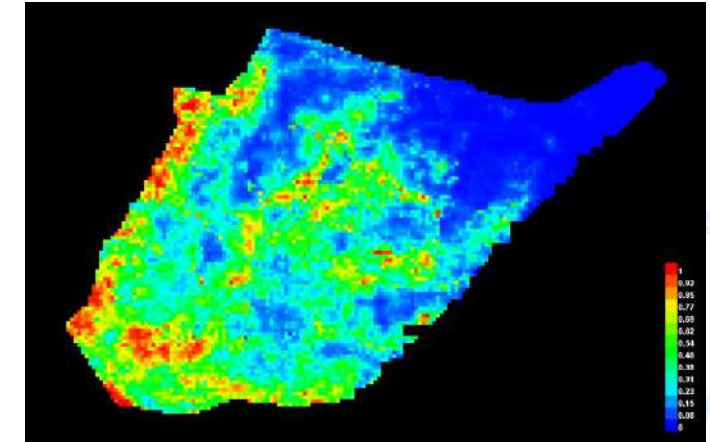
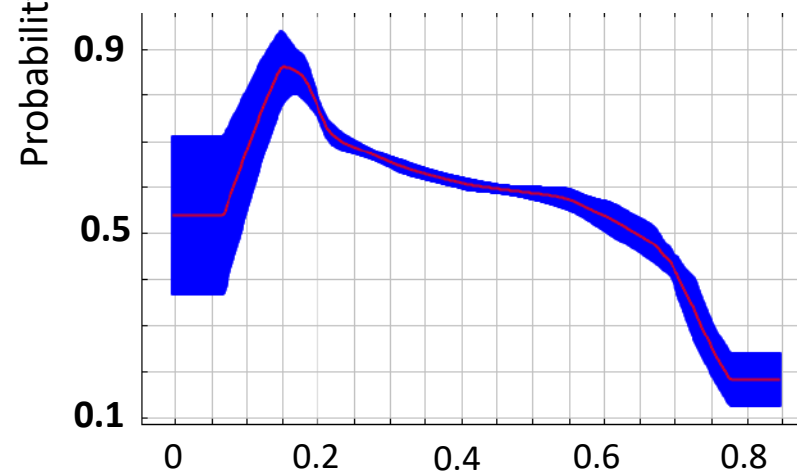
Use of space and habitat selection by cattle

- Maxent to model use of space
- Most important variables:
 - Distance to water
 - Distance to roads
 - Slope
 - NDVI
- Least important variables:
 - Land cover (%)

Response to distance to water (m)

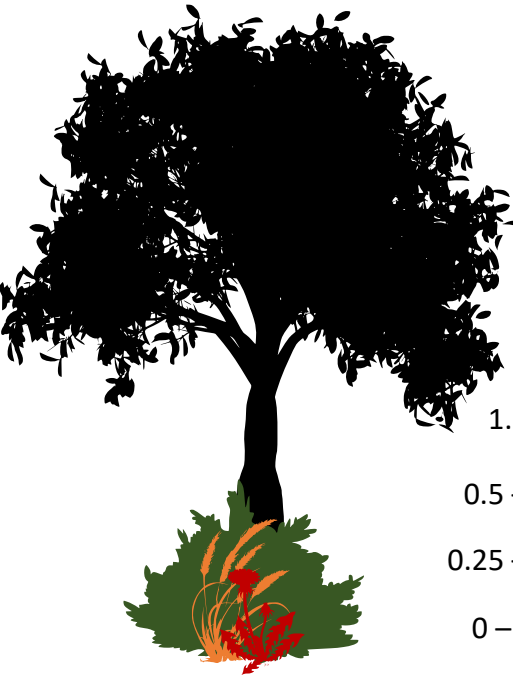


Response to summer NDVI



[distance to water not included]

Effects on vegetation structure (1st year)

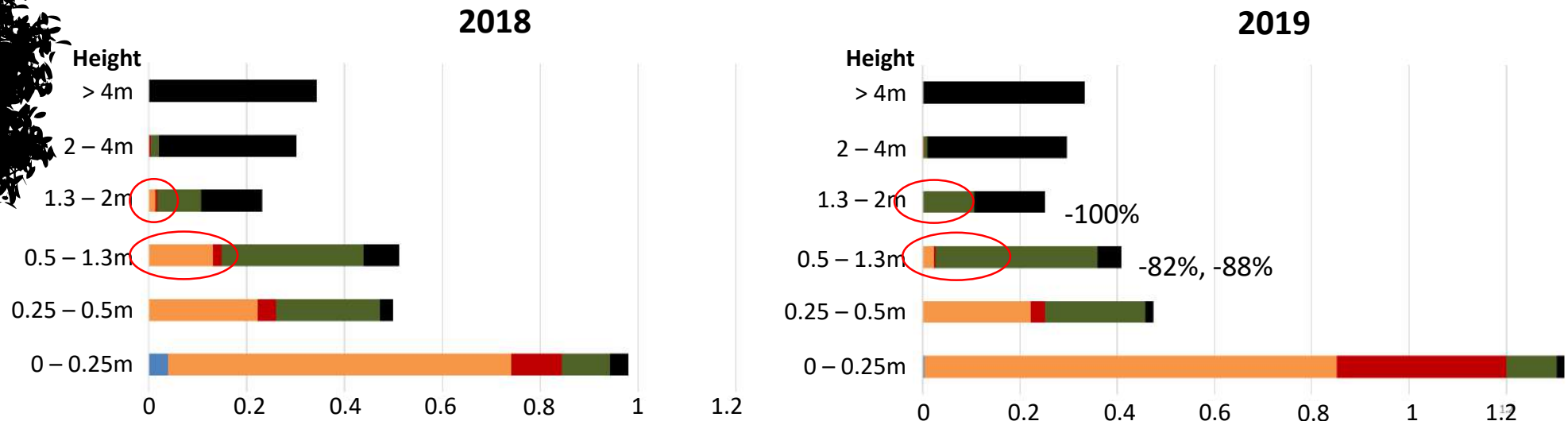


24 (100m²) quadrats=pixels
21 intercept points p/quadrat
= 504 points

■ Bare soil ■ Grass ■ Forb ■ Shrub ■ Tree

- Decline of oak cover in the lower layers

Effects on vegetation structure (1st year)

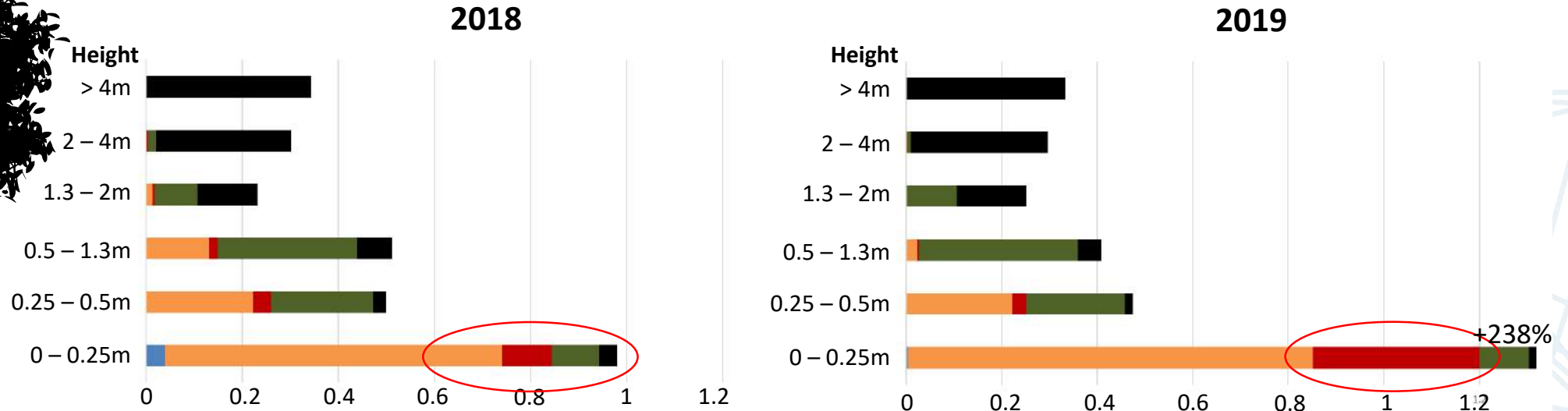
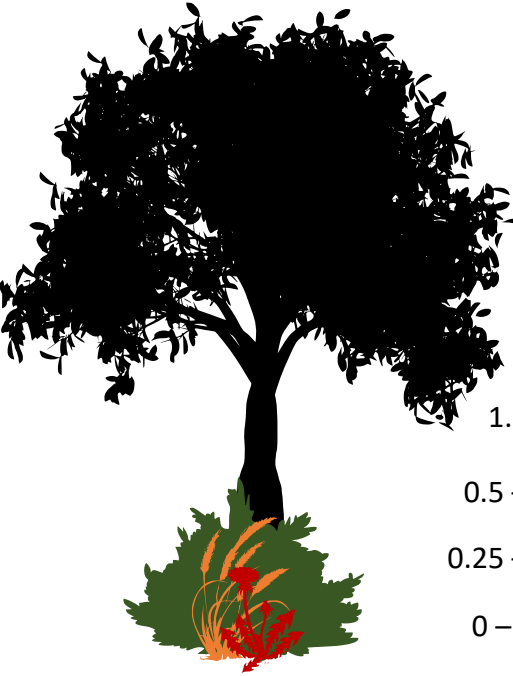


24 (100m²) quadrats=pixels
21 intercept points p/quadrat
= 504 points

■ Bare soil ■ Grass ■ Forb ■ Shrub ■ Tree

- Decline of oak cover in the lower layers
- Decline of tall grasses in the intermediate layers

Effects on vegetation structure (1st year)



24 (100m²) quadrats=pixels
21 intercept points p/quadrat
= 504 points

■ Bare soil ■ Grass ■ Forb ■ Shrub ■ Tree

- Decline of oak cover in the lower layers
- Decline of tall grasses in the intermediate layers
- Increase of forbs in the ground layer
- Changes to NDVI not conclusive yet

To conclude...

Use of space:

Distance to water

Presence of roads/trails

Vegetation complexity

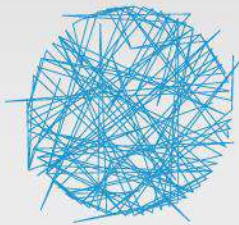
Effects on vegetation structure:

Possible impacts on oak regeneration

Simplification of structure at lower layers

Limited control of shrub cover





LARSyS
Laboratory of Robotics
and Engineering Systems



MARETEC
MARINE ENVIRONMENT & TECHNOLOGY CENTER

This work was supported by FCT/MCTES (PIDDAC) through project UID/EEA/50009/2019

V.P. is supported by contract CEECIND/04469/2017 from FCT

Operational Group "GO SILVPAST" is an Operational Group financed by PDR 2020.



FCT
Fundação para a Ciência e a Tecnologia
MINISTÉRIO DA CIÊNCIA, TECNOLOGIA E ENSINO SUPERIOR



TÉCNICO
LISBOA