

CONGRESSO PINEA SPOT LISBOA 2023

21 A 23 DE NOVEMBRO



CONGRESSO PINEA SPOT
LISBOA 2023
21 A 23 DE NOVEMBRO

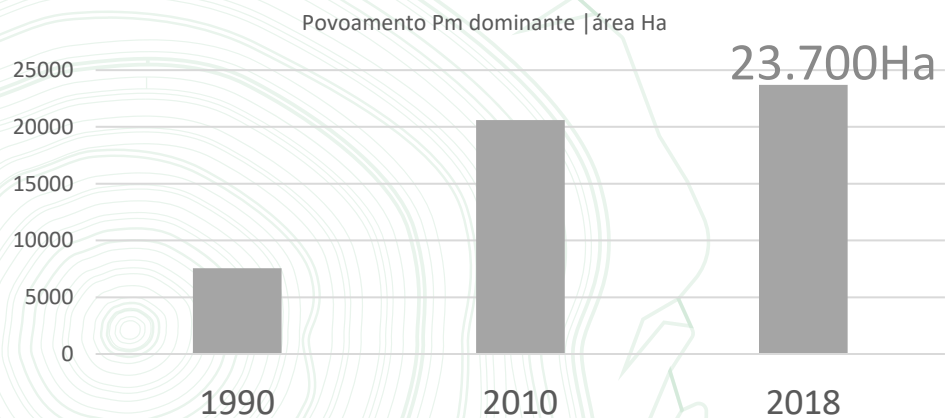
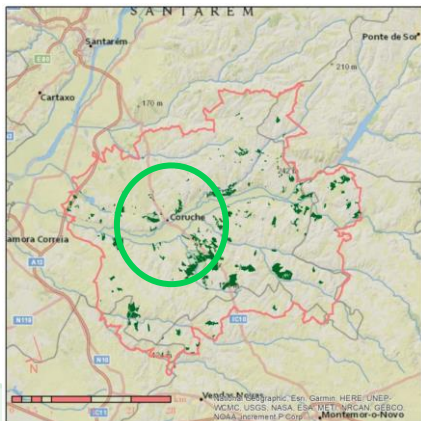
Parque Clonal APFC

Contributo para Melhores
Materiais Florestais de Reprodução

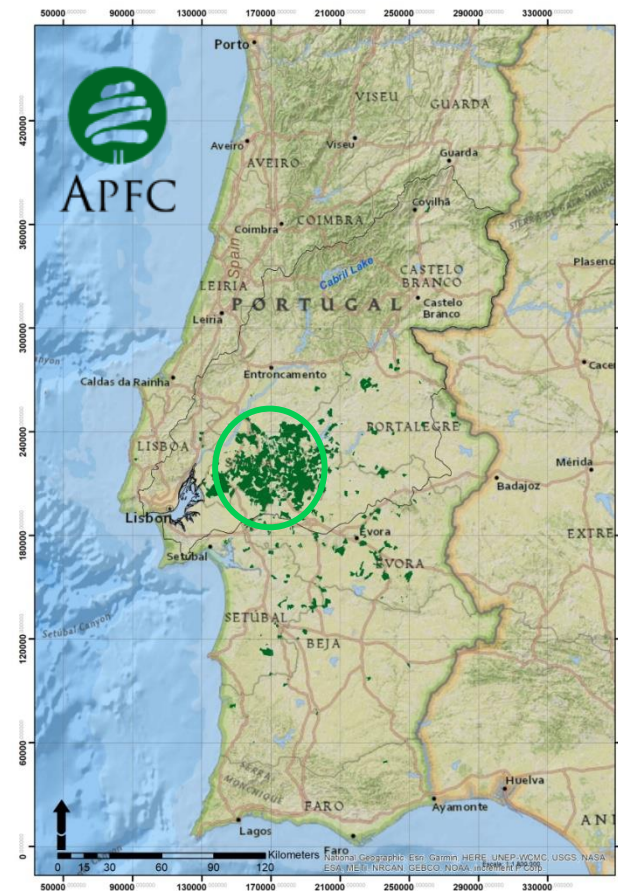


Associação dos Produtores Florestais de Coruche

572 sócios | Produtores Florestais
244.786 ha | Floresta

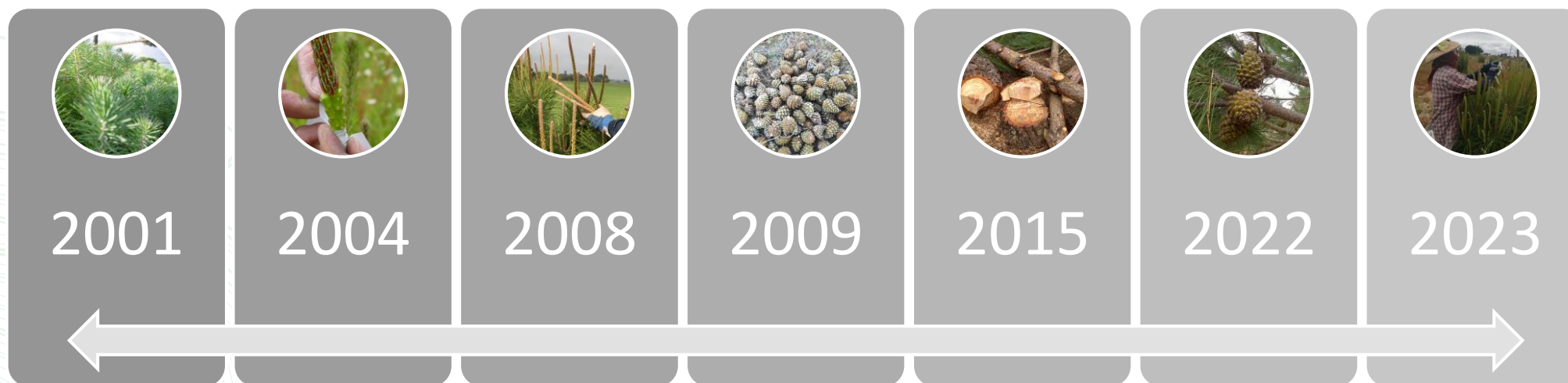


fonte : DGT COS 90, COS2010 e COS2018

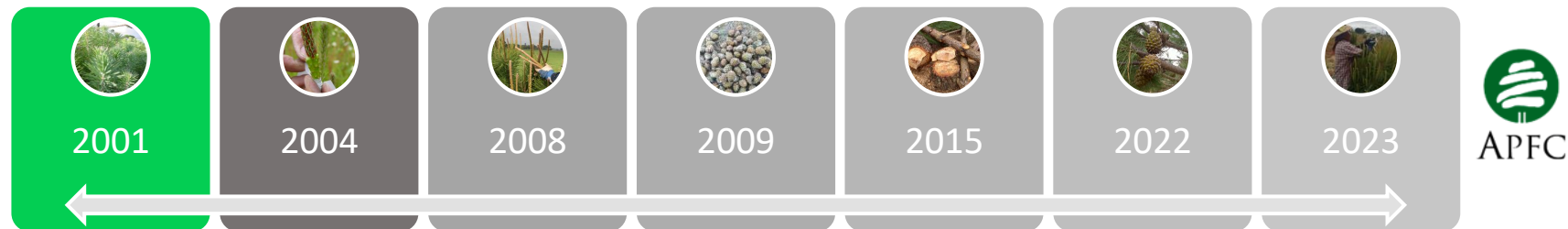


Parque Clonal

Produção de Garfos para ENXERTIA



Qualidade
Melhoramento



Plantação

8 Hectares

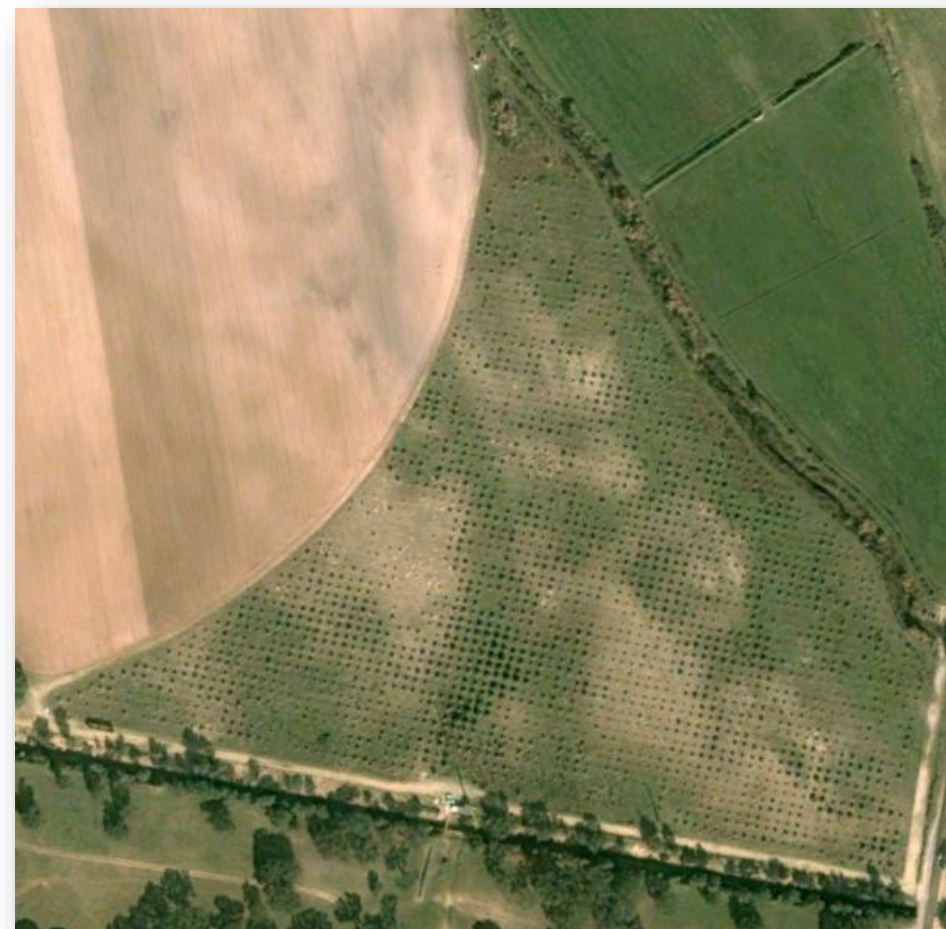
Compasso 5m x 5m

Densidade 400 plantas /ha

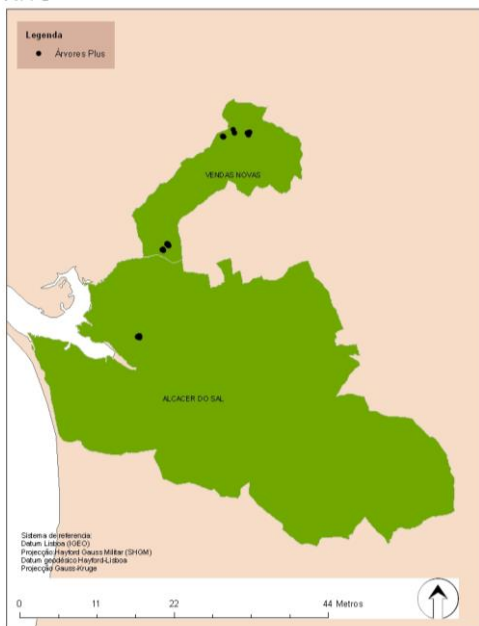
Total de pinheiros plantados 3.200

Taxa de sucesso de 89%

2.871 Pinheiros mansos



GoogleEarth 2006



64 árvores Plus *

Vendas Novas e Alcácer do Sal

* identificadas pelo INIAV e Serviços Florestais



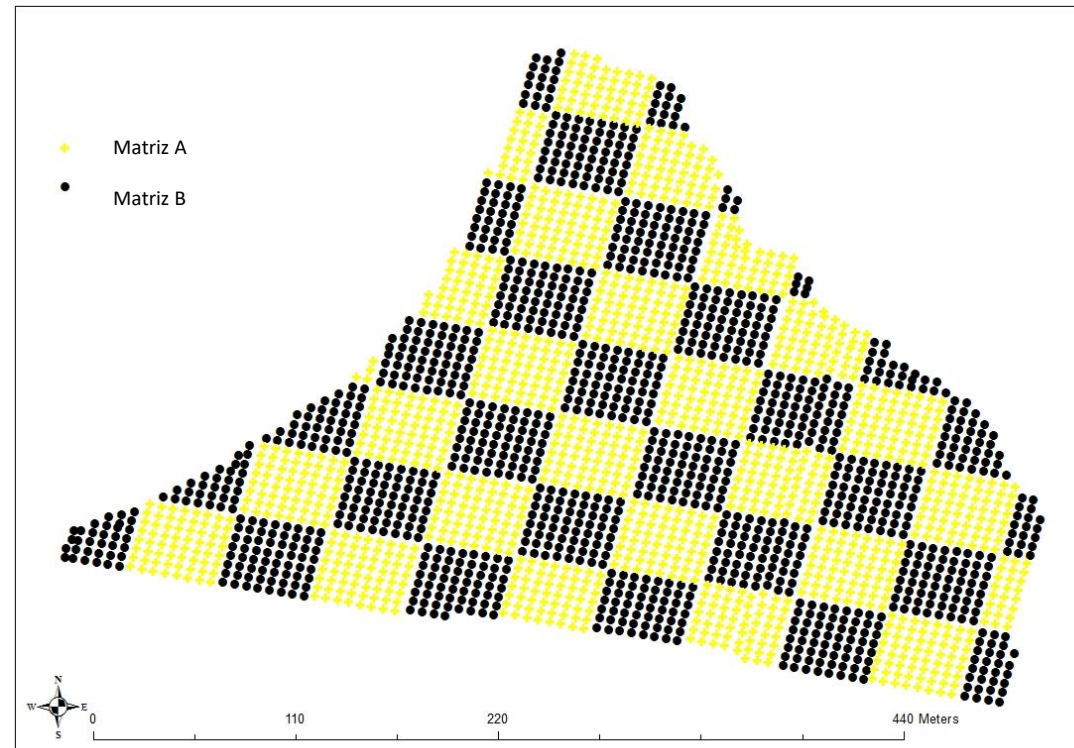
Enxertia

Matriz A | 64 clones

60	9	56	28	33	26	23	25
39	19	41	15	42	59	51	52
61	7	58	16	24	10	50	27
37	49	30	48	47	12	40	29
54	45	18	43	4	21	32	8
44	63	64	57	35	34	5	62
3	53	36	38	2	14	46	6
17	20	55	11	13	31	1	22

Matriz B | 64 clones

41	12	7	57	32	28	25	62
33	61	44	24	42	51	35	64
37	55	13	45	19	29	27	50
17	3	23	9	20	39	1	5
14	15	54	60	8	16	10	26
34	63	52	22	2	30	21	56
47	43	49	40	11	6	48	4
38	58	53	59	46	18	36	31





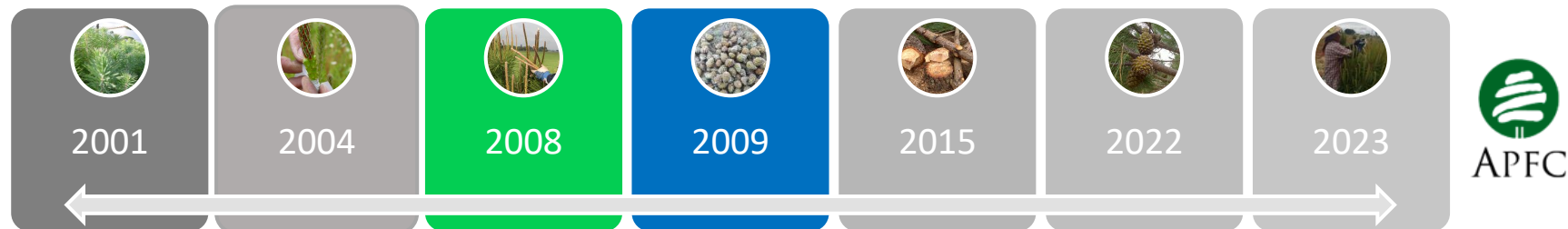
Enxertia



Taxa de sucesso de **52%**
1.501 Pinheiros mansos enxertados

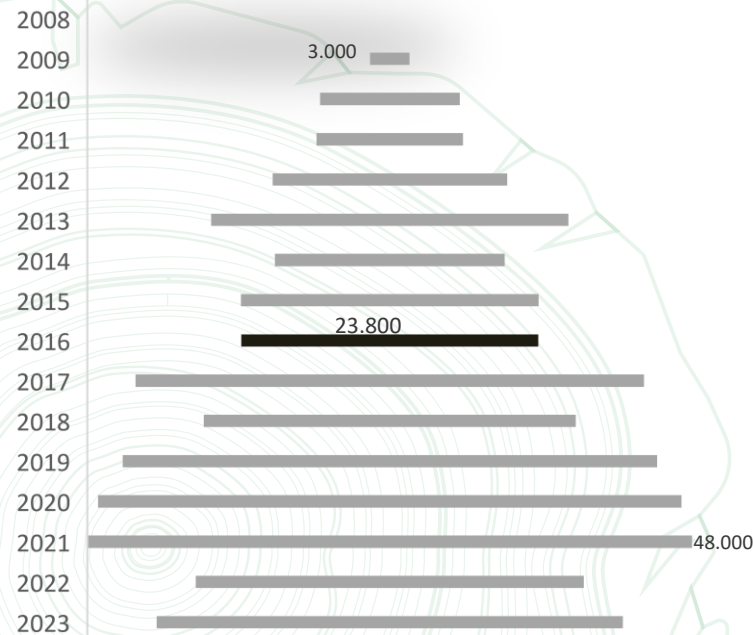


Pomar Qualificado - certificado

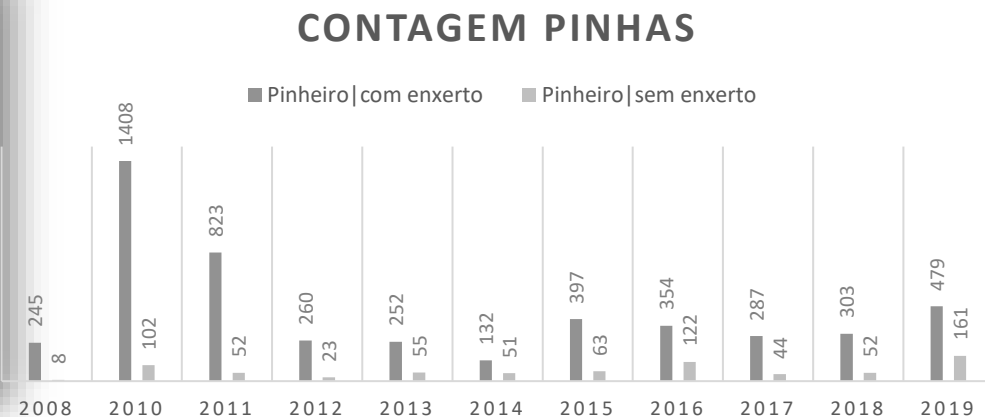


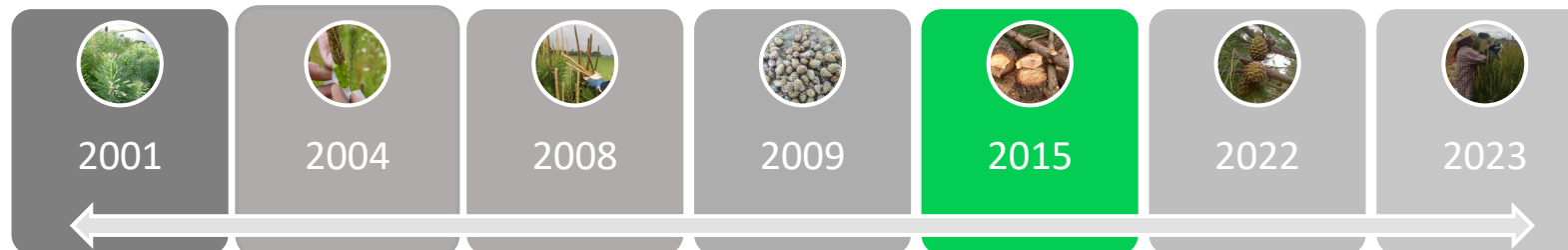
Apanha Garfos para Enxertia

Instalação de Parcelas permanentes

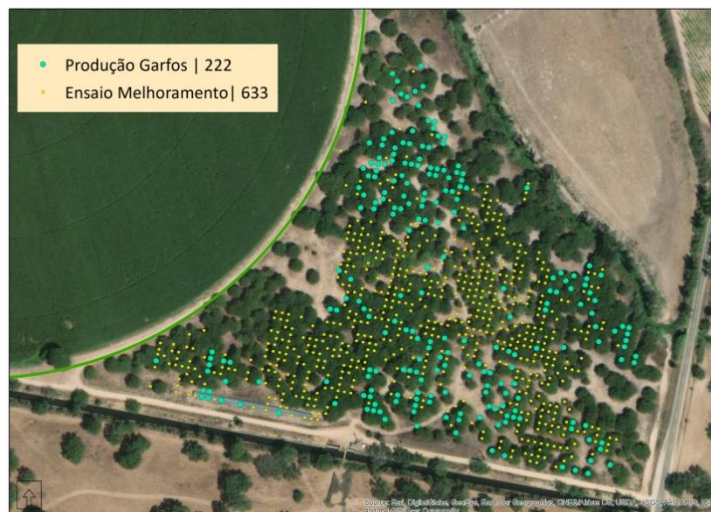


GoogleEarth 2009





Desbaste

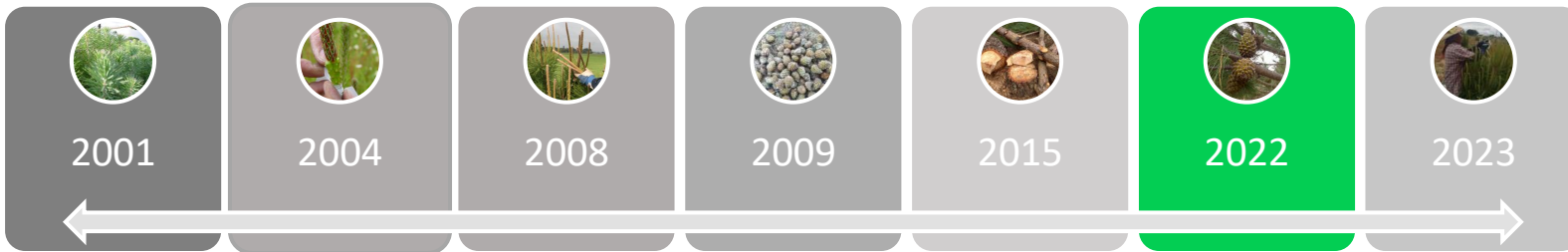


Abate de pinheiros não enxertados
Manutenção parcelas permanentes

222 - Pinheiros enxertados | apanha de garfos

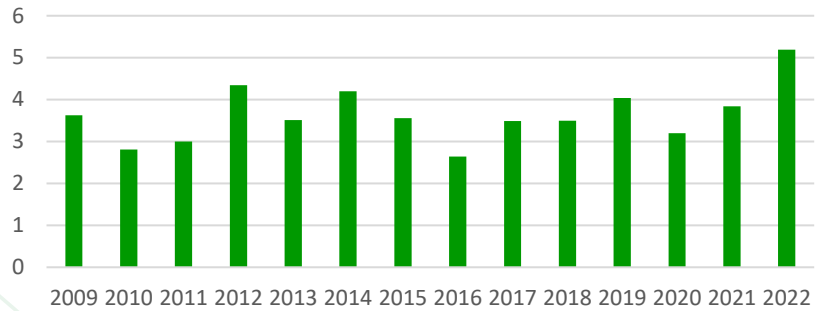
633 - Pinheiros enxertados | ensaio melhoramento (sem apanha de garfos)



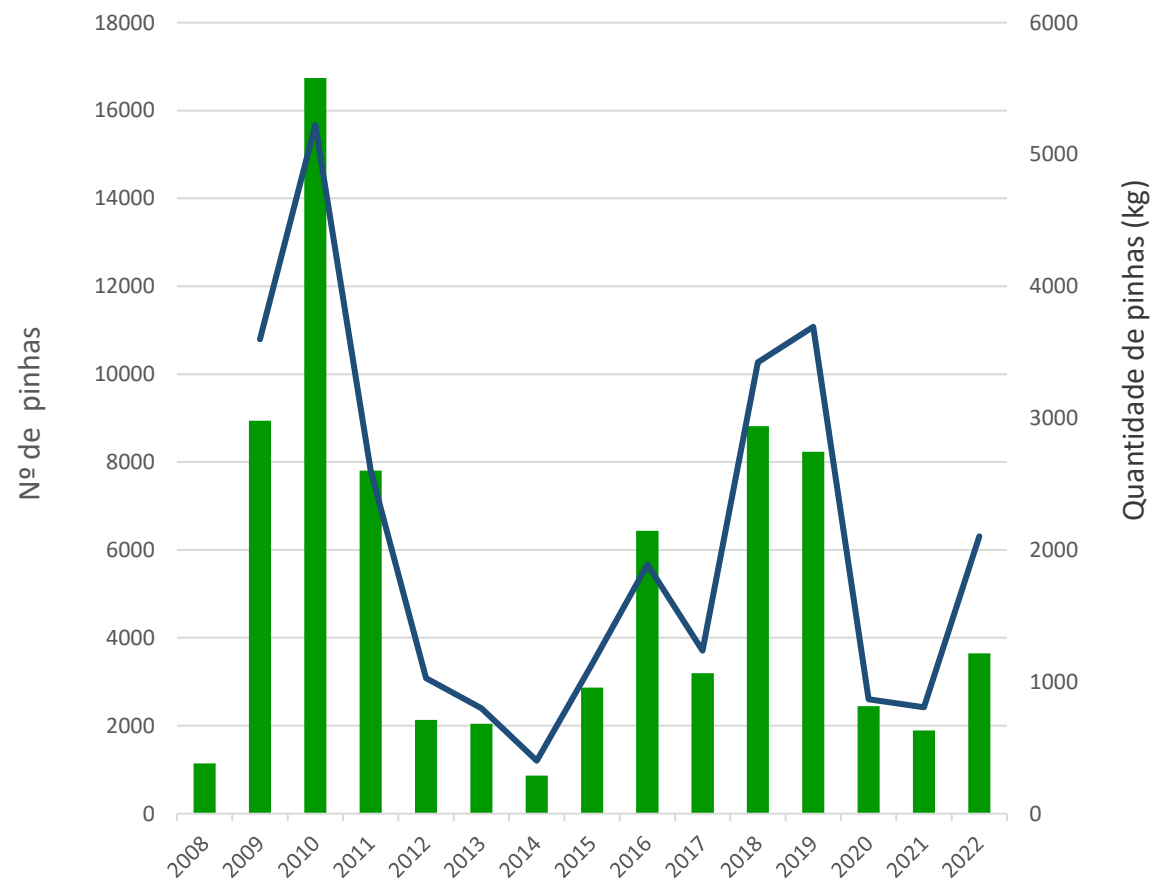
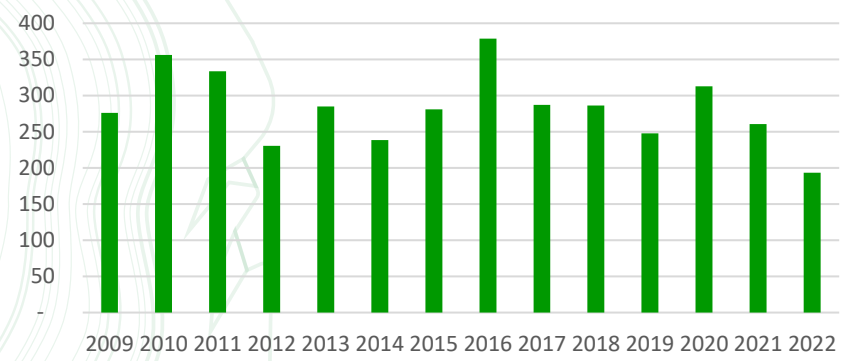


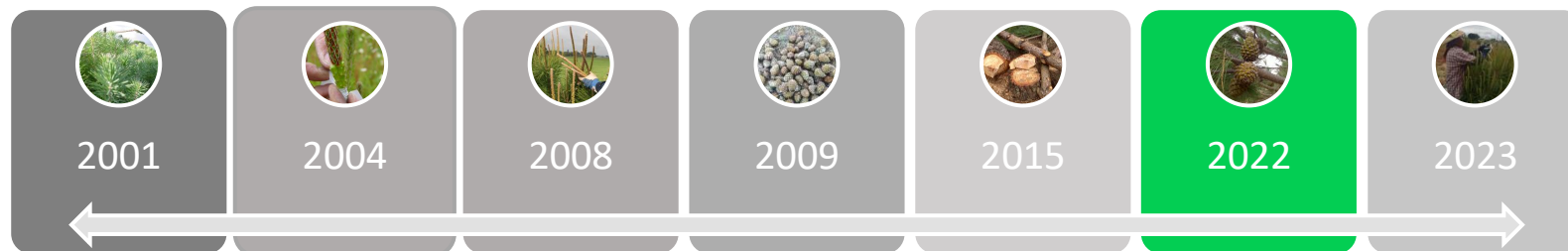
Resultados

Nº pinhas por kilo

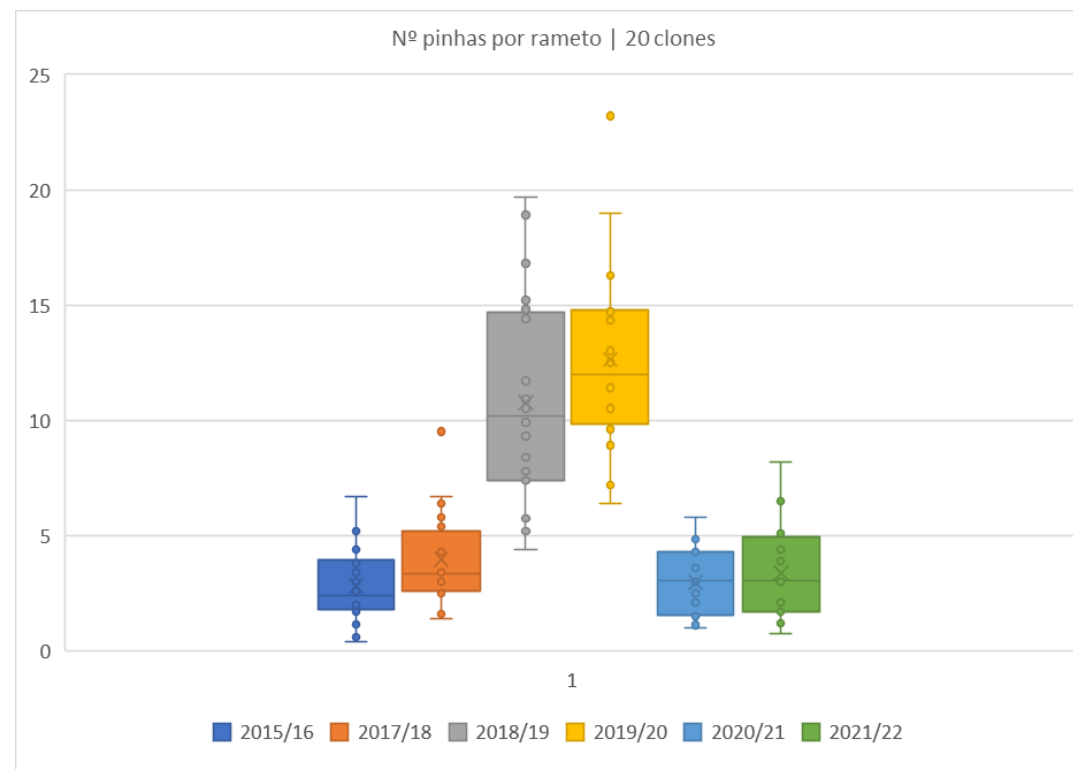
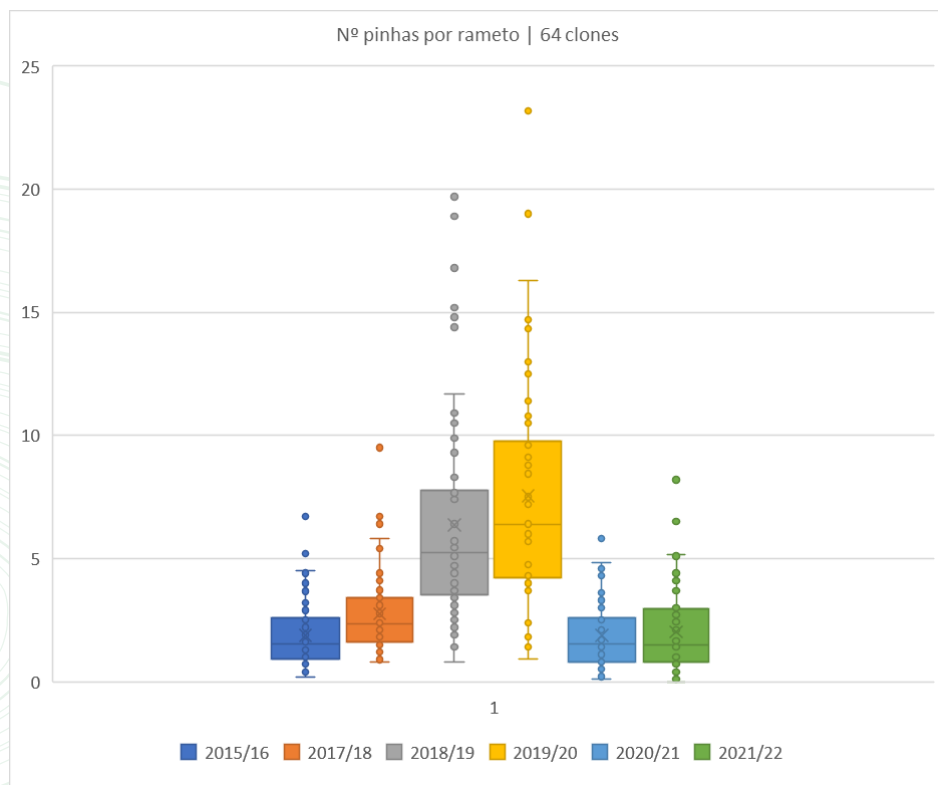


Peso por pinha (grama)

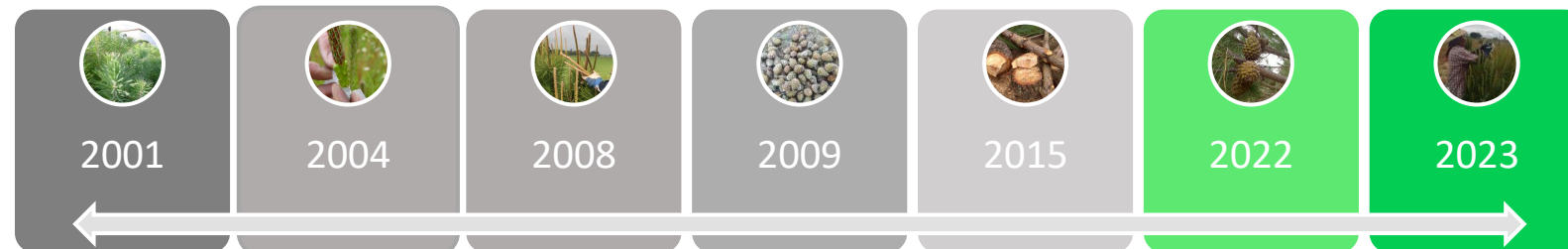




Resultados



Qualificado - Testado...



Pomar II

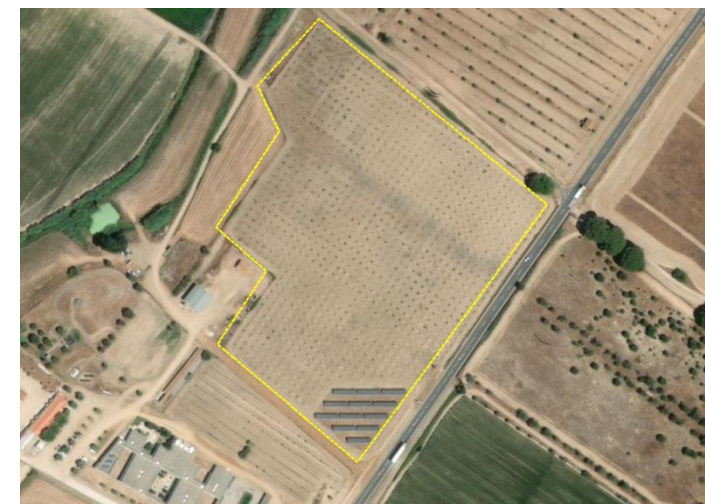
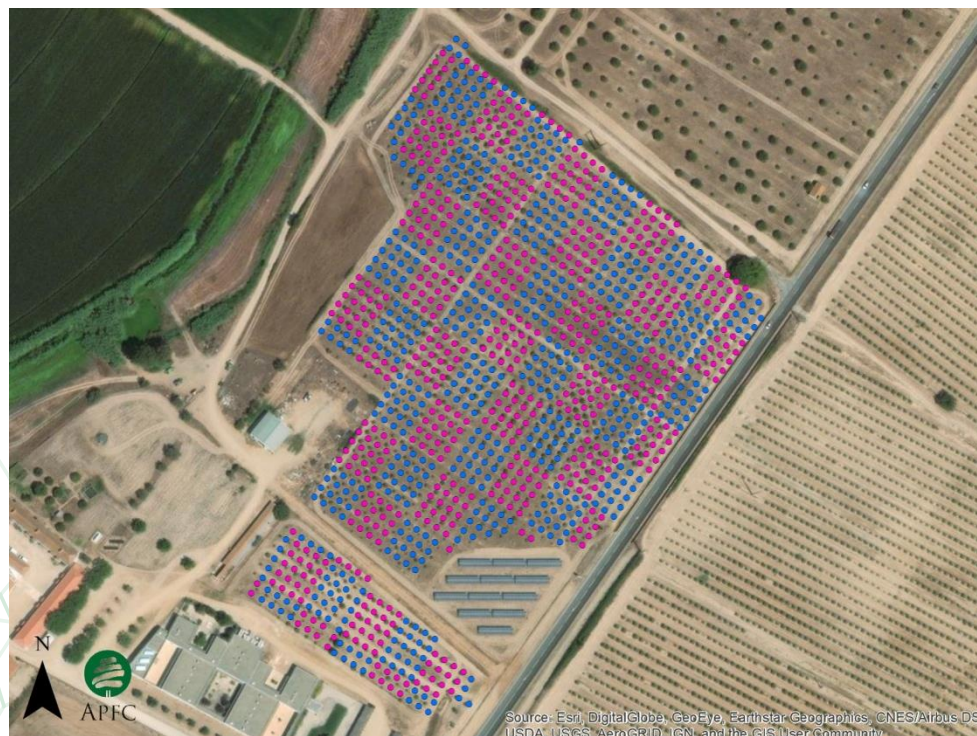
4,93 Hectares, plantação 2017
 compasso 6mx6m
1.367 pinheiros plantados
 Enxertia **2021**
 Taxa de sucesso de **71%**
973 pinheiros enxertados

Matriz A | 20 clones

6	1	18	4	16
13	10	5	19	9
8	15	20	2	17
12	3	7	14	11

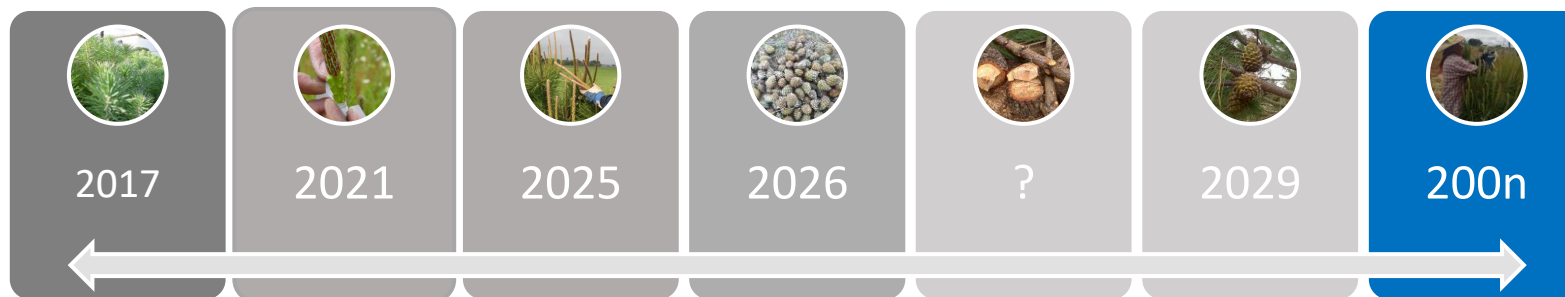
Matriz B | 20 clones

14	17	13	4	19
20	6	18	5	12
16	10	8	2	1
3	7	15	9	11



Source: Esri, DigitalGlobe, GeoEye, Earthstar Geographics, CNES/Airbus DS, USDA, USGS, AeroGRID, IGN, and the GIS User community

Pomar II



Início de Produção de garfos 2025

Plena Produção de Garfos 2029

Potencial de ganho produtivo **51%**

Manutenção da vertente I&D e Produção (garfos)

Realização de ensaios complementares /fertilização

Saber mais... e servir melhor os Produtores.

CONGRESSO PINEA SPOT LISBOA 2023

21 A 23 DE NOVEMBRO

Entidade Responsável:



Patrocínio:



Organização:



Cofinanciado por:



Agradecimentos

Teresa Afonso - APFC

Margarida Gaspar – APFC

Conceição Santos Silva - UNAC

Agradecimento muito especial

Miguel Teles Branco

Maria Augusta Vacas de Carvalho

Margarida Alpuim